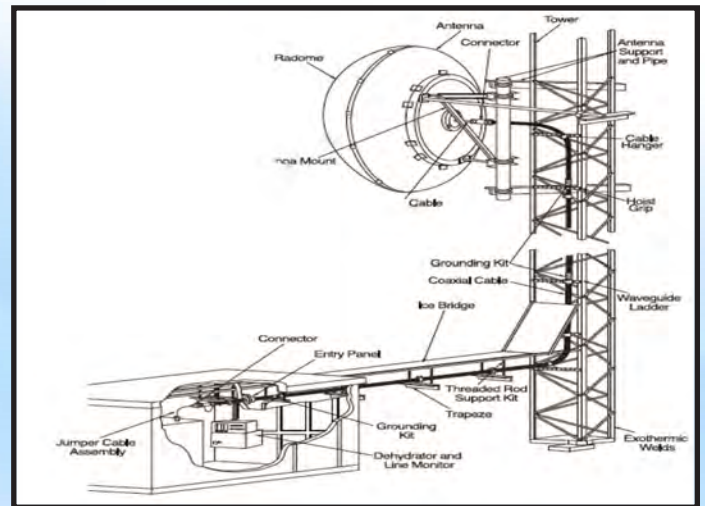
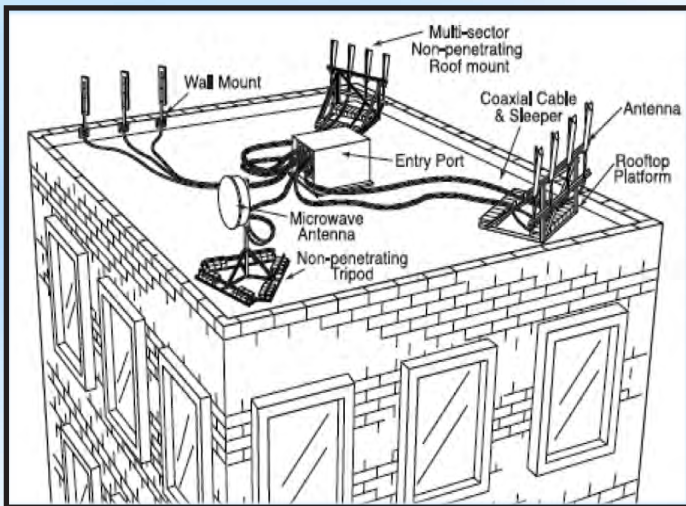


| Infrastructure | | Broadband | | Inbuilding | |
|--|----------------------------|--|----------------------------|-----------------------------|--|
| Antennas | | Radios | | Active DAS Solutions | |
| Amphenol Antenna | Panorama Antennas | Point to Point (Licensed/Unlicensed) | | Corning MobileAccess | |
| Cellular Specialties | PCTEL | BridgeWave | Ubiquiti Networks | G-Wave Solutions | |
| Comprod | - Maxard, Bluewave, Wy-sys | Cambium Networks | RADWIN | | |
| Comtelco | Radiowaves | DragonWave Inc. | Rajant Corp. | | |
| Kathrein/Scala | RFS Celwave | Datasat Technologies | Earthprint Tech | | |
| Huber&Suhner | Telewave | Point to Multipoint (Licensed/Unlicensed) | | Antennas | |
| Laird Technolgies | Til-Tek | Cambium Networks | RADWIN | Amphenol Antenna Solutions | |
| Larsen Antennas | Mobile Mark | Eion Wireless | CalAmp | Cellular Specialties | |
| | Wade Antennas | Datasat Technologies | Rajant Corp. | Huber+Suhner | |
| Cable, Connectors, Jumpers & Accessories | | GE MDS | Ubiquiti Networks | Kathrein/Scala | |
| Amphenol | RF Industries | Accessories | | Laird Technolgies | |
| Amphenol Connex | RFS Cablewave | Antennas | | Panorama Antennas | |
| Belden | SAT-PAK | Laird Technologies | Signal Inside | PCTEL | |
| Bird | Signal Inside | Radio Waves | Ubiquiti Networks | Pulse Electronics | |
| Huber+Suhner | Superior Essex | RFS | | RFS Celwave | |
| Kathrein/Scala | TCC Industries | Lightning Protection/Grounding | | Signal Inside | |
| Laird Technolgies | Times Microwave | Huber + Suhner | Smiths Protection | Passive DAS Solutions | |
| PCTEL | Trilogy | Times Microwave | - Polyphaser - Transtector | Acentury | |
| PPC/JMA | Ubiquiti Networks | Signal Inside | Ubiquiti Networks | G-Wave Solutions | |
| | Perfect Vision | Towers & Site Equipment | | Bird | |
| Two-way Radio Accessories | | Delhi | Multilink | Cellular Specialties | |
| Ampergen | Gamber Johnson | DBB | Perfect Vision | Kathrein/Scala | |
| Case-Tech | GL Batteries | Easy Up | Polyphaser | RF Industries | |
| Comprod | iTECH | Hammond | RF Industries | RFS Cablewave | |
| Connect Systems Inc | Midian | Harger | ROHN | Signal Inside | |
| CPI | Newmar | Huber + Suhner | | Amplifiers/Repeaters | |
| dB Spectra | PanaVise | | | Cellphone-Mate (Surecall) | |
| GAI-Tronics | Speco | | | Cellular Specialties | |
| | Zetron | | | G-Wave Solutions | |
| Power & Related Products | | | | Spotwave Wireless | |
| Astron | Smiths Power | | | weBoost(Wilson Electronics) | |
| Chargeguard | Samlex | Fiber Products | | | |
| East Penn | Specialty Concepts | Amphenol | Cables Unlimited | Perfect Vision | |
| ICT | Transtector | Belden | Draka | RAD Data | |
| Morningstar | TrippLite | Blonder Tongue | Huber +Suhner | Remeo Wire and Cable | |
| Newmar | | Corning Fiber Solutions | Multilink | Superior Essex | |
| Amplifiers | | Wireline | | | |
| Comprod | G-wave RF TPL | ACI Communications | Draka | Remeo Wire and Cable | |
| Crescend Technologies | Telewave | Antronix | GDT | Signal Inside | |
| Filter Products | | Arrow Fasteners | Greenlee | Superior Essex | |
| Comprod | RFS Cablewave | Belden | Hold Tite | Techspan Industries Inc. | |
| dbSpectra | RFS Celwave | Blonder Tongue | Multilink | Telecrafter | |
| EMR | Telewave | Budco | New World | | |
| Kathrein/Scala | | Cable Ready | Polyphaser/Transtector | Cabinets | |
| Test & Measurement Equipment | | Cableprep | Polywater | DBB | |
| Acentury | RF Industries | Canusa | Perfect Vision | Hammond Mfg | |
| Asentria | Times Microwave | DL Custom | | Multilink | |
| Bird | dbSpectra | Audio | | Video | |
| Comprod | | Astatic Commercial Audio | Cables Unlimited | Ubiquiti Networks | |
| | | Bogen | Enforcer | Speco | |
| | | | Peerless Industries | RADWIN | |

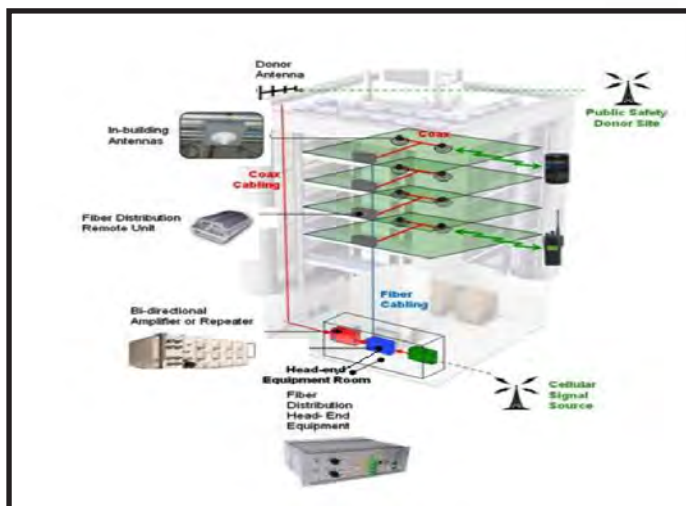
Value Added Services

- | | | | |
|-------------------------------|--------------------------|-----------------------|-------------------------|
| • Bundling | • Connector Attachment | • Engineering Support | • Leasing |
| • Kitting | • Jumper Assembly | • In-Building design | • Trade-In Program |
| • Just In Time Delivery (JIT) | • PIM tested | • Path Analysis | • New or Used Equipment |
| • Cable Processing | • Power System Solutions | • Mesh design | |
| • Logistics (3PL) | • Filter Tuning | • Training | |

Infrastructure



In-Building



Broadband

