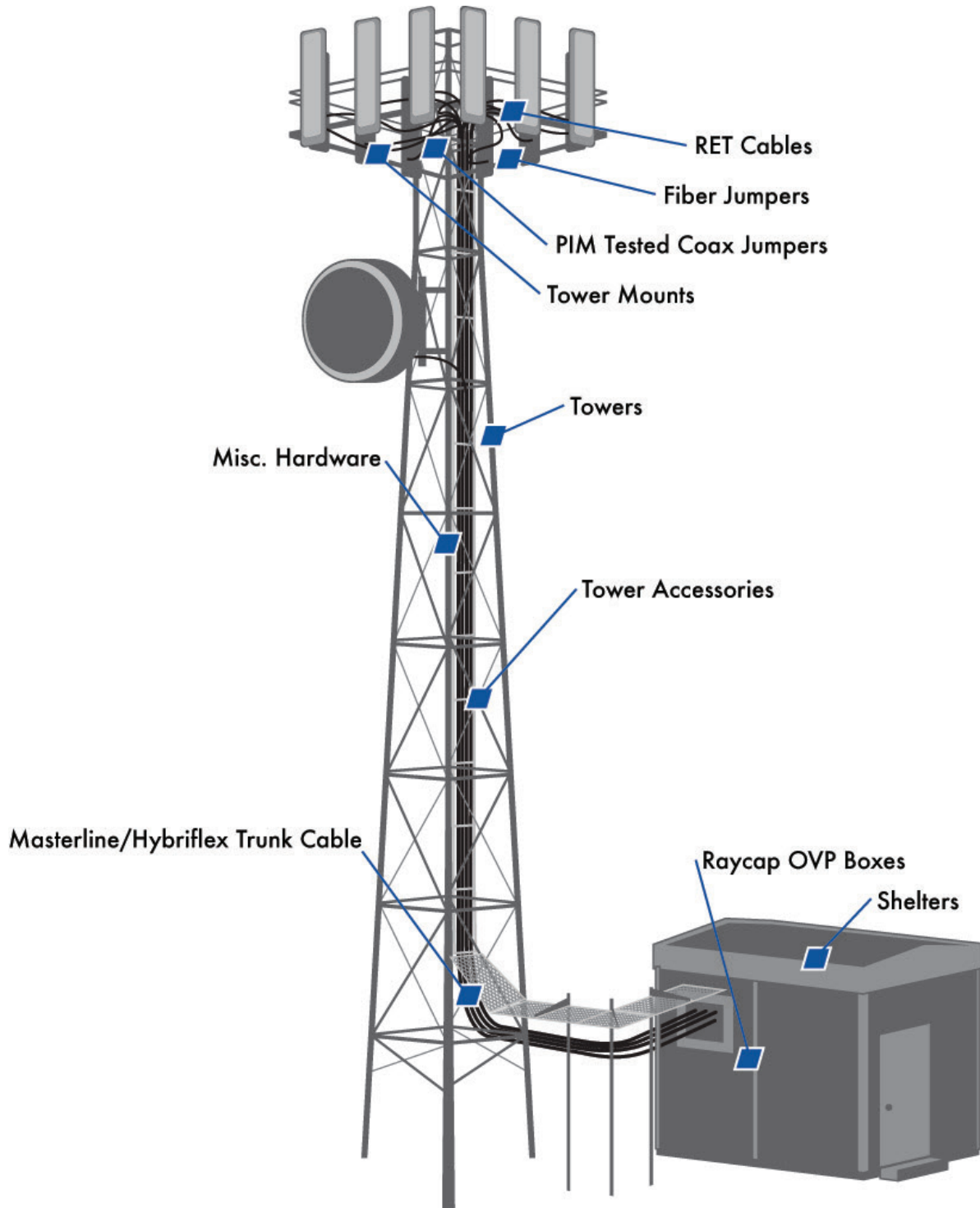


Remote Radio Head Solutions



6 X12 Masterline/Hybriflex Trunk Cable	H+S Part Number	RFS Part Number
90 FT FiberFeed trunk, 12x6 AWG conductors, blunt cut top/bottom, 18 alarm wires blunt cut, 24 single mode fiber, 6-OVP box DLC breakout, top and bottom	85010017	HB114-13U6S12-90F
120 FT FiberFeed trunk, 12x6 AWG conductors, blunt cut top/bottom, 18 alarm wires blunt cut, 24 single mode fiber, 6-OVP box DLC breakout, top and bottom	85010020	HB114-13U6S12-120F
150 FT FiberFeed trunk, 12x6 AWG conductors, blunt cut top/bottom, 18 alarm wires blunt cut, 24 single mode fiber, 6-OVP box DLC breakout, top and bottom	85010023	HB114-13U6S12-150F
180 FT FiberFeed trunk, 12x6 AWG conductors, blunt cut top/bottom, 18 alarm wires blunt cut, 24 single mode fiber, 6-OVP box DLC breakout, top and bottom	85010026	HB114-13U6S12-180F
210 FT FiberFeed trunk, 12x6 AWG conductors, blunt cut top/bottom, 18 alarm wires blunt cut, 24 single mode fiber, 6-OVP box DLC breakout, top and bottom	85010029	HB114-13U6S12-210F
240 FT FiberFeed trunk, 12x6 AWG conductors, blunt cut top/bottom, 18 alarm wires blunt cut, 24 single mode fiber, 6-OVP box DLC breakout, top and bottom	85010032	HB114-13U6S12-240F
270 FT FiberFeed trunk, 12x6 AWG conductors, blunt cut top/bottom, 18 alarm wires blunt cut, 24 single mode fiber, 6-OVP box DLC breakout, top and bottom	85010035	HB114-13U6S12-270F
300 FT FiberFeed trunk, 12x6 AWG conductors, blunt cut top/bottom, 18 alarm wires blunt cut, 24 single mode fiber, 6-OVP box DLC breakout, top and bottom	85010038	HB114-13U6S12-300F
330 FT FiberFeed trunk, 12x6 AWG conductors, blunt cut top/bottom, 18 alarm wires blunt cut, 24 single mode fiber, 6-OVP box DLC breakout, top and bottom	85010041	HB114-13U6S12-330F
360 FT FiberFeed trunk, 12x6 AWG conductors, blunt cut top/bottom, 18 alarm wires blunt cut, 24 single mode fiber, 6-OVP box DLC breakout, top and bottom	85010044	HB114-13U6S12-360F
390 FT FiberFeed trunk, 12x6 AWG conductors, blunt cut top/bottom, 18 alarm wires blunt cut, 24 single mode fiber, 6-OVP box DLC breakout, top and bottom	85010047	HB114-13U6S12-390F

Ret Cables (Extreme Weather Proof)	123Wireless Part Number
.05 meter RET Cable	HUT-123-171-005
1 meter RET Cable	HUT-123-171-01
2 meter RET Cable	HUT-123-171-02
3 meter RET Cable	HUT-123-171-03
4 meter RET Cable	HUT-123-171-04
5 meter RET Cable	HUT-123-171-05
6 meter RET Cable	HUT-123-171-06
9 meter RET Cable	HUT-123-171-09
9 meter RET Cable	HUT-123-171-10
15 meter RET Cable	HUT-123-171-15
20 meter RET Cable	HUT-123-171-20
25 meter RET Cable	HUT-123-171-25
30 meter RET Cable	HUT-123-171-30
40 meter RET Cable	HUT-123-171-40
50 meter RET Cable	HUT-123-171-50
60 meter RET Cable	HUT-123-171-60
70 meter RET Cable	HUT-123-171-70
80 meter RET Cable	HUT-123-171-80
90 meter RET Cable	HUT-123-171-90
100 meter RET Cable	HUT-123-171-100

Misc. Accessories	Part Number
1 5/8" Grommet, Universal 14MM-36MM, 10 pk	BCU158X
Grommets for Hybrid Trunk (6x12), 1 5/8" Barrel Cushion	85032133
Grommets for Low Inductance Hybrid Trunk (6x12), 1 5/8" Barrel Cushion	HS-HI396158
Grommets for Hybrid Jumper (1x1 or 1x2), 1 5/8" Barrel Cushion, 1 hole version	85021464
Grommets for Hybrid Jumper (1x1 or 1x2), 1 5/8" Barrel Cushion, 2 hole version	85009268
Ground Bars, Tinned Copper, 1/4" X 2" X 10", Universal Mounting Hardware Kit	SII-GBUK14210-T
Ground Bars, Tinned Copper, 1/4" X 4" X 12", Universal Mounting Hardware Kit	SII-GBUK14412-T
Ground Bars, Tinned Copper, 1/4" X 4" X 14", Universal Mounting Hardware Kit	SII-GBUK14414-T
Ground Bars, Tinned Copper, 1/4" X 4" X 20", Universal Mounting Hardware Kit	SII-GBUK14420-T
Ground Bars, Tinned Copper, 1/4" X 4" X 24", Universal Mounting Hardware Kit	SII-GBUK14424-T
Ground Bars, Galvanized Steel, 1/4" X 4" X 24", Hardware NOT included	SII-GBU14424-G
Ground Bars, Universal Mounting Hardware Kit	SII-GBUMK
1/2" Buckles, Earlock, 100'	SII-BB-12
Stainless Steel Banding, 1/2"	SII-SSB-12
Universal Angle Adapters	SII-SI-AAA
Round Member Adapters, (2"-3"), (3"-4")", (4"-5"), (5"-6")	SII-SI-RMAXX
Vinyl Tape, 3/4" X 66' (blue, black, red, green, gray, brown, yellow & white)	SII-T-COLOR

ALU Fiber Jumpers	H+S Part No.	RFS Part No.
MLC_HYBRID_ALU_JUMPER 1X1(10AWGX1) SM-LCDX1_5 FT	84226686	HBF058-08U1S1-5F
MLC_HYBRID_ALU_JUMPER 1X1(10AWGX1) SM-LCDX1_10 FT	84226688	HBF058-08U1S1-10F
MLC_HYBRID_ALU_JUMPER 1X1(10AWGX1) SM-LCDX1_15 FT	84226690	HBF058-08U1S1-15F
MLC_HYBRID_ALU_JUMPER 1X1(10AWGX1) SM-LCDX1_20 FT.	84226692	HBF058-08U1S1-20F
MLC_HYBRID_ALU_JUMPER 1X1(10AWGX1) SM-LCDX1_30 FT	84226696	HBF058-08U1S1-30F

Raycap OVP Boxes	H+S Part No.	RFS Part No.
Raycap 2 OVP box for 2 RRUs	85008067	DB-E1-2C-4AB-0Z
Raycap 6 OVP box for up to 6 RRUs	85008069	DB-B1-6C-12AB-0Z
Raycap "Rack Mount" 6 OVP box	85018815	DB-B1-2260-PF-48
Raycap "Rack Mount" fiber management box, Sliding/Pull out drawer	85025018	DB-RTF-4575
Raycap "Rack Mount" fiber management box, Fixed w/removable lid	85025017	DB-RTF-4501

PIM Tested Coax Jumpers	JMA Part No.
6 ft DIN Male to DIN Male jumper LDF4 - Certified for VSWR and PIM using PPC Connectors w/WPS	PPC-LDMWDMW-12-6
8 ft DIN Male to DIN Male jumper LDF4 - Certified for VSWR and PIM using PPC Connectors w/WPS	PPC-LDMWDMW-12-8
10 ft DIN Male to DIN Male jumper LDF4 - Certified for VSWR and PIM using PPC Connectors w/WPS	PPC-LDMWDMW-12-10